

NOTICE TO HIKERS

Title of Notice: Lake Okeechobee Scenic Trail Closed Clewiston to Moore Haven.

Submitters Name: Jenna Taylor

Submitters Title: Central/South Program Trail Manager

Phone: (772) 242-3665

Email: JennaT@floridatrail.org

Region: South

FTA Map No. 37 & 39

Perm. Change? No

Ending Date: Until notice is removed.

Description/Map: The Florida Trail on the Lake Okeechobee Scenic Trail between Clewiston at Levee Park to Moore Haven is closed due to construction on the dike. Campsites along closures will not be accessible during construction. See turn by turn directions and map below for road walk alternative.

Going northbound:

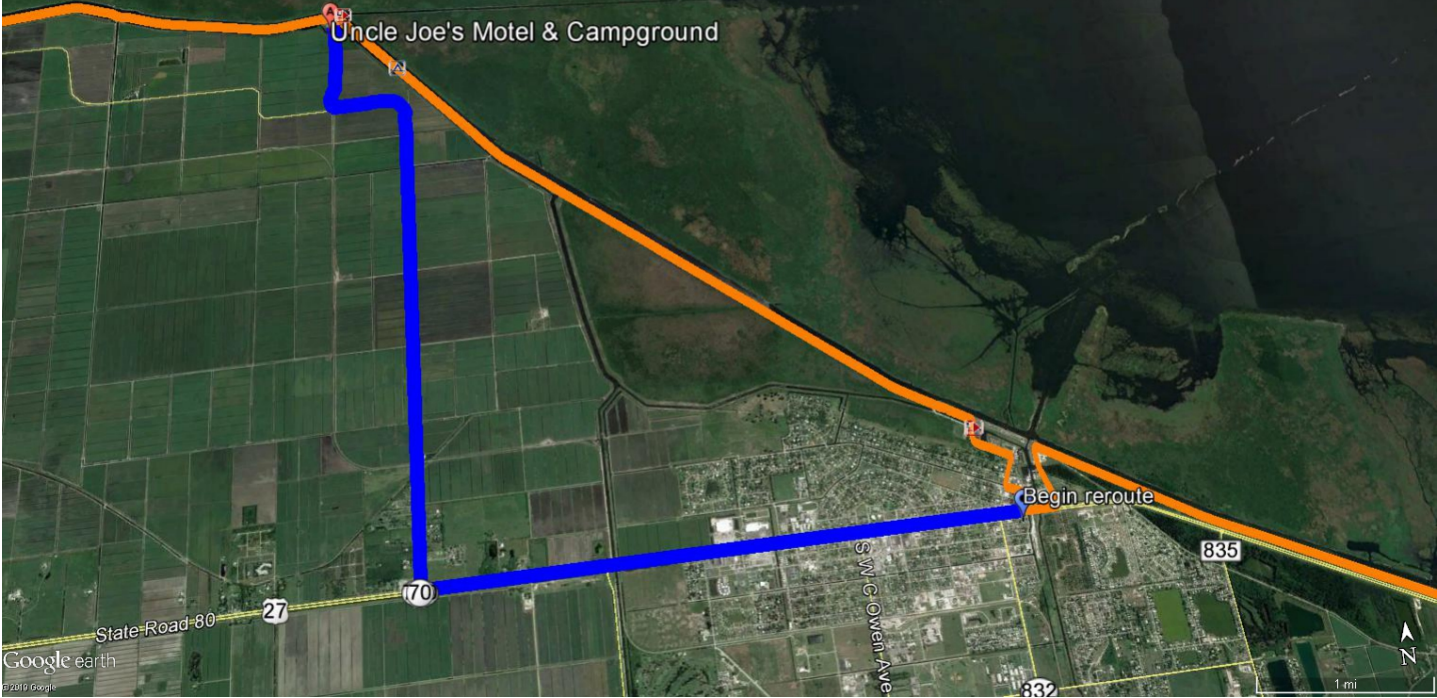
1. Exit the trail at San Diego St. N and US27 and head north.
2. Continue on US27 for 3.74 miles.
3. Turn right onto 720.
4. Continue on 720 for 3.67 miles.
5. Make a right onto Griffin Rd. for .71 miles.
6. Rejoin the trail at Uncle Joe's.

Going southbound:

1. Exit the trail at Uncle Joe's on Griffin Rd.
2. Go .71 miles on Griffin Rd.
3. Make a left onto CR720.
4. Continue 3.67 miles on CR720.
5. Make a left on US27.
6. Continue on US27 for 3.74 miles.
7. Make a left at San Diego St. N. and rejoin the trail.

Okeechobee Closure Clewiston to Moore Haven
Closure due to construction.

- Legend**
- Begin reroute
 - Okeechobee construction closure roadwalk
 - Uncle Joe's Motel & Campground



Google earth
© 2019 Google