



National Park Service  
U.S. Department of the Interior

Big Cypress National Preserve  
33100 Tamiami Trail East  
Ochopee, FL 34141

239 – 695 - 4111  
[www.nps.gov/BICY](http://www.nps.gov/BICY)

---

## Big Cypress National Preserve News Release

**Immediate Release:** 2-22-19

**Park Contact:** Rita Garcia, Public Information Officer, 239-695-1128 or Laurie Humphrey, Acting Public Information Officer Fire, 239-695-4111

### Big Cypress National Preserve Prescribed Fire and Trail Closure

Ochopee – Southwest Florida & Caribbean Interagency Fire and Aviation will be looking to conduct a prescribed fire with a trail closure effective 2/22/19. Trails will reopen once the prescribed fire is completed and the area is safe for the public. The closure affects portions of the Florida National Scenic Trail, Bluebird Trail and Oasis Trail. Please see attached map and closure order.

Implementation of these treatments will be weather and resource dependent. Additional notifications will be sent out prior to the start of these prescribed fires. If you have scheduled activities in the areas mentioned, please inform the Fire and Aviation staff.

Prescribed fires are an important part of resource management at Big Cypress National Preserve. Implementation of all prescribed fires will be weather and resource dependent and after careful review of the local environmental indices, prescribed fire parameters, and weather forecast, it will be determined if the current conditions, are favorable, to safely conduct these activities.

Fire activity is managed by, the Southwest Florida and Caribbean Fire and Aviation Management Program (SWFLCAR) a cooperative program between Big Cypress National Preserve and the US Fish and Wildlife Service Region 4 and District 6.

Any questions or concerns about the fire please contact Orlando Genao 305-522-2532 Acting Fire Management Officer (AFMO) or the Southwest Florida & Caribbean Interagency Fire and Aviation (SWFLCAR) Duty Officer, 239-719-0241.

For additional updates and closures, please visit [nps.gov/bicy](http://nps.gov/bicy) for park alerts or fire updates.

# Closure Area

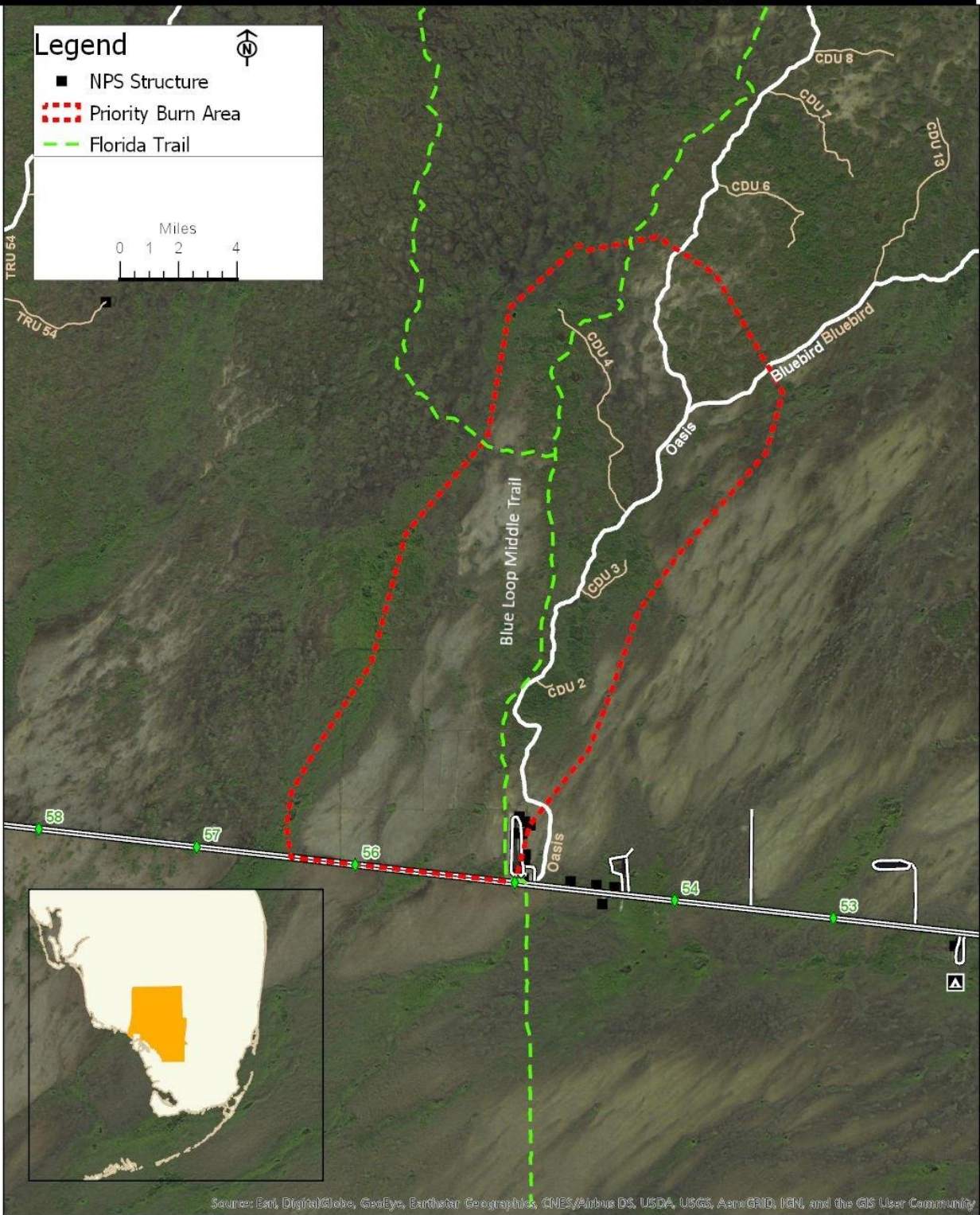
National Park Service  
U.S. Department of Interior  
Big Cypress National Preserve



**Legend**

- NPS Structure
- ▤ Priority Burn Area
- Florida Trail

Miles  
0 1 2 4



Source: Esri, DigitalGlobe, GeoEye, Earthstar Geographics, CNES/Airbus DS, USDA, USGS, AeroGRID, IGN, and the GIS User Community